



PORTO CRUISE TERMINAL



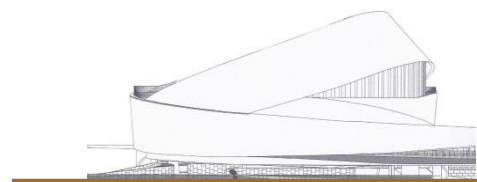
Meetings & Events

Piso 0 *Recepção*

Neste piso encontra-se um átrio comum, iluminado por luz natural, a partir do qual o edifício se desenvolve em espiral, acompanhado por uma rampa até à cobertura. Com uma área de 300 m², é o local perfeito para recepção aos convidados ou para um cocktail de boas-vindas.

Floor 0 Reception

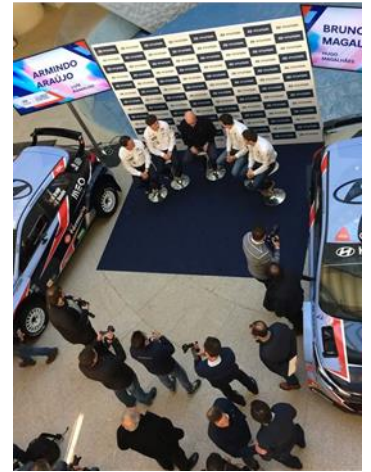
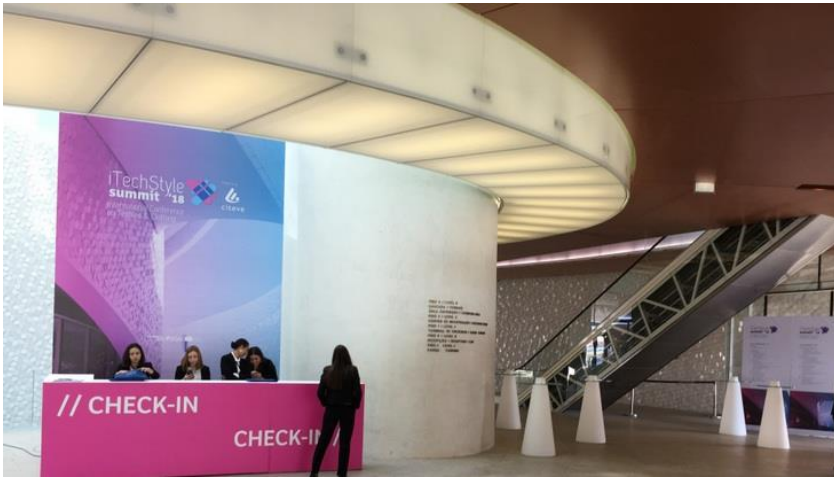
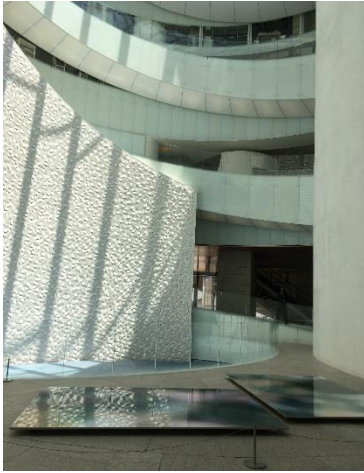
On the main floor, it is located the full day light lobby from which the building rises in a spiral flow, including a ramp leading to the cover. With 300 sqm area, this is the perfect place to receive the guests or to a welcome cocktail.

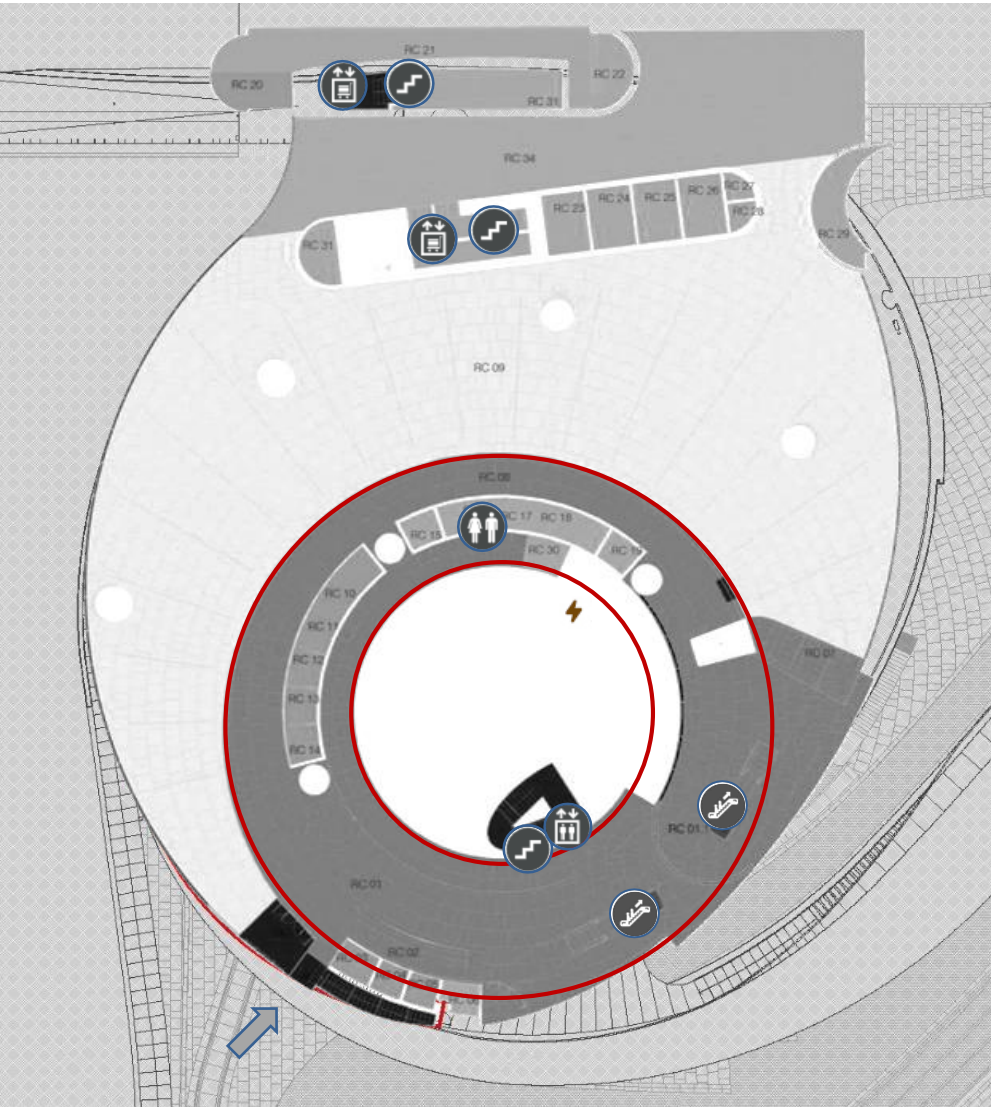




Local perfeito para
um cocktail de
boas-vindas

*Perfect place for a
welcome reception*






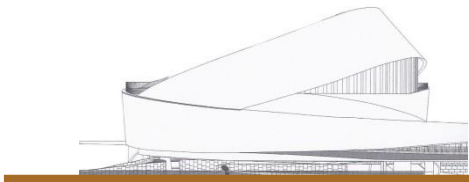
Piso 0 Planta
Floor 0 Floor Plan

Áreas | Capacidades
Areas | Capacities

	
300	200

Ficha Técnica
Technical Information

 Tomada Monofásica 16A
Single-phase plug



Piso 1 Sala de Embarque

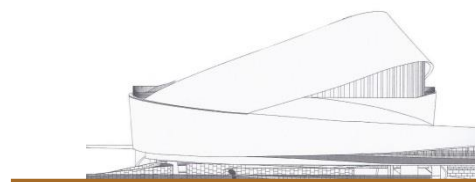
A sala de embarque marca pela sua versatilidade. Destina-se fundamentalmente a operações de cruzeiros e embarque e desembarque de passageiros e tripulantes. Complementarmente acolhe eventos corporativos.

Com uma área de 1.050 m², a sala reúne todas as condições necessárias para acolher diversos tipos de eventos, como seminários, congressos, conferências, reuniões apresentações e exposições.

Floor 1 Passenger Room

The passenger room stands out for its versatility. It is primarily intended for passengers and cruisers, but can also works as a large room to receive corporate events.

With 1.050 sqm area, the room meets all the necessary conditions to host different types of events, such as seminars, congresses, conferences, meetings, presentations and exhibitions.



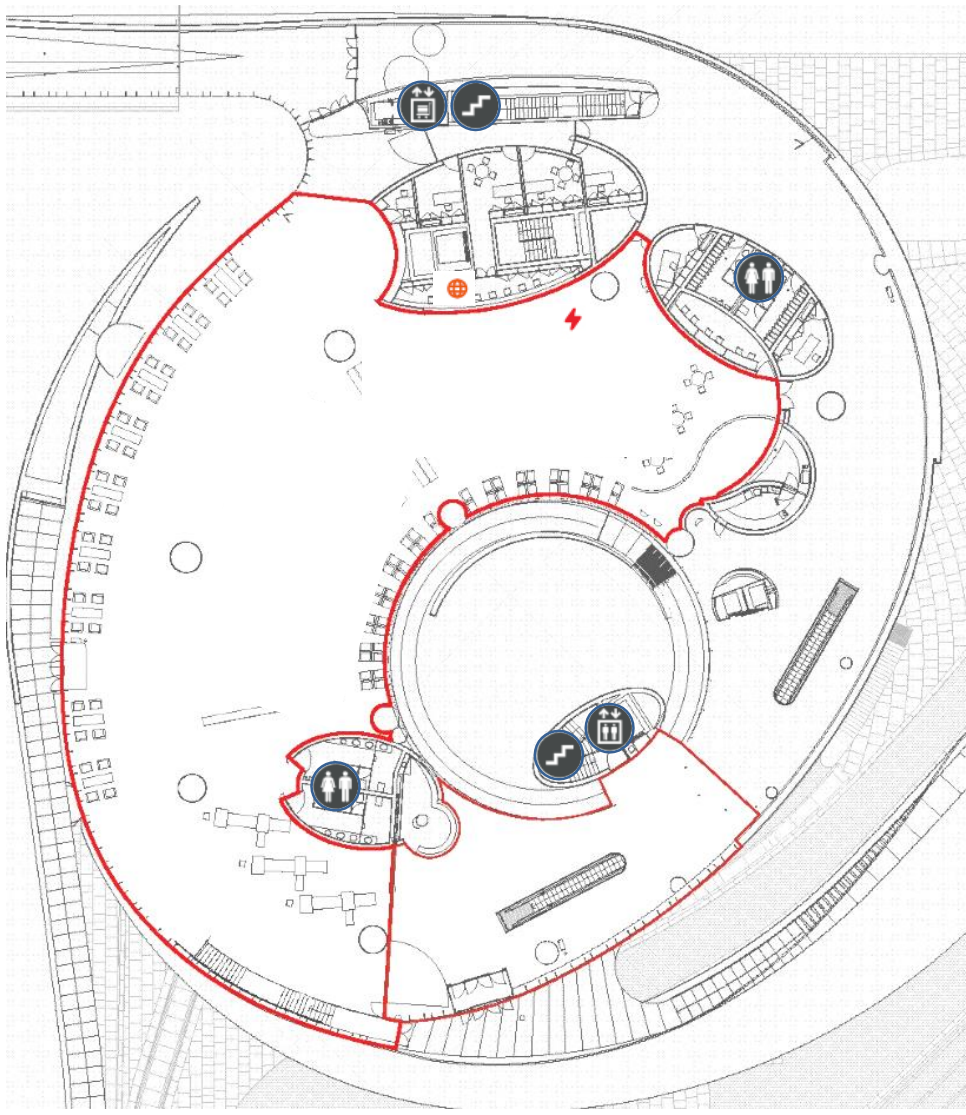


Local perfeito para
congressos, exposições e
apresentações

*Perfect place for
congresses, exhibitions
and presentations*

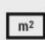









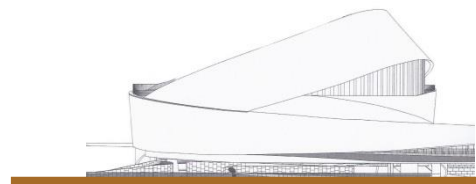
Piso 1 Planta
 Floor 1 Floor Plan

Áreas | Capacidades
 Areas | Capacities

	
1.050	4 m
	
400	400

Ficha Técnica
 Technical Information

-  Tomada Trifásica 63A
 Three-phase plug
-  Tomada Internet
 Internet plug



Piso 3 Sala de Eventos

É um local privilegiado para a realização de eventos, dispondo de uma área de exposição com 650 m². Neste espaço social e público por excelência, situa-se a sala nobre que se destaca pela sua beleza, funcionalidade e polivalência.

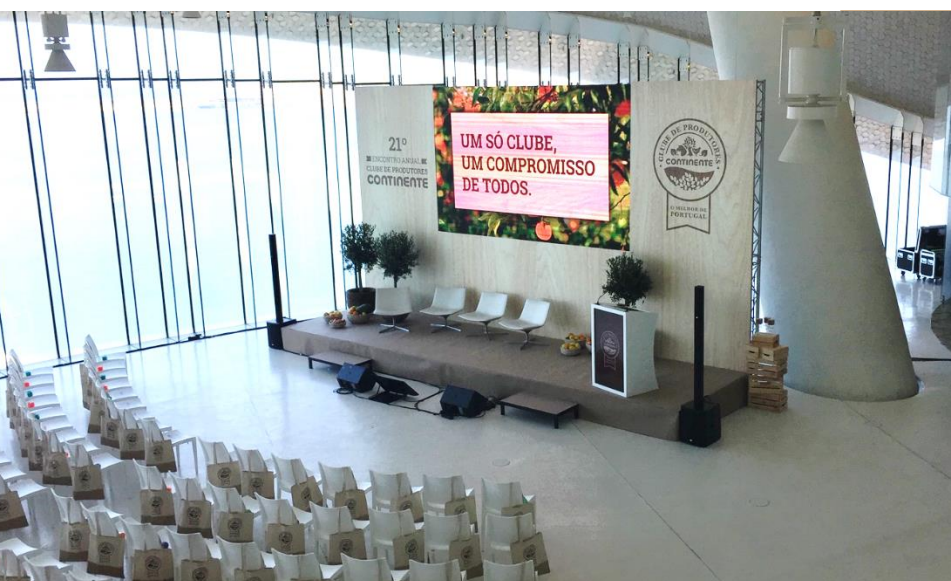
As suas características únicas, favorecem o acolhimento dos mais diversos eventos, como congressos, desfiles de moda, jantares de gala, exposições e apresentações.

Floor 3 Events Room

It is a prime location for hosting events, offering an exhibition of 650 sqm area. In this social and public floor, there is the noble hall faced to the ocean, that stares by its beauty, functionality and versatility.

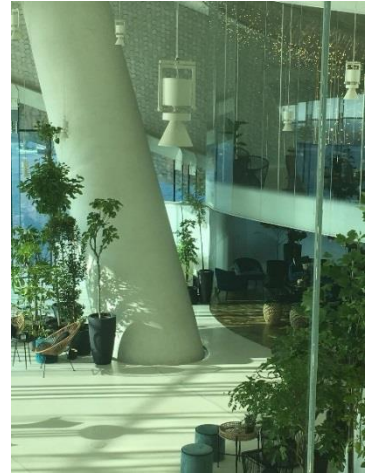
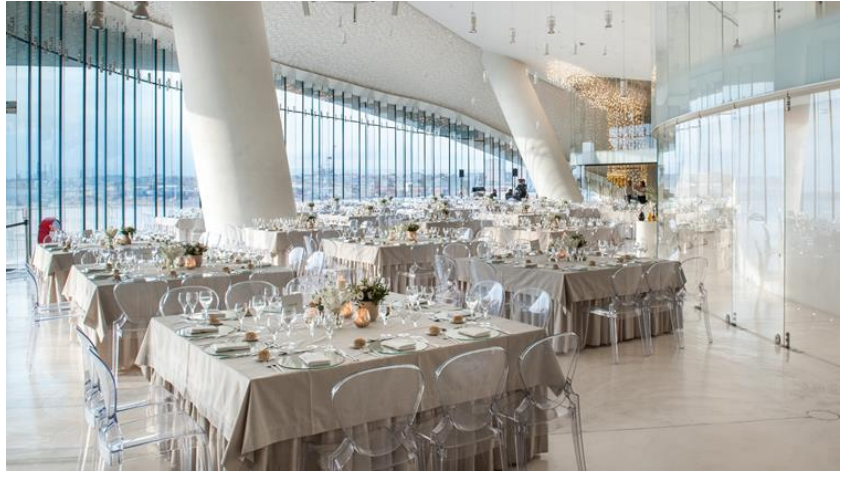
Its unique characteristics make this the ideal place for hosting all kind of events, such as congresses, fashion shows, gala dinners, exhibitions and presentations.

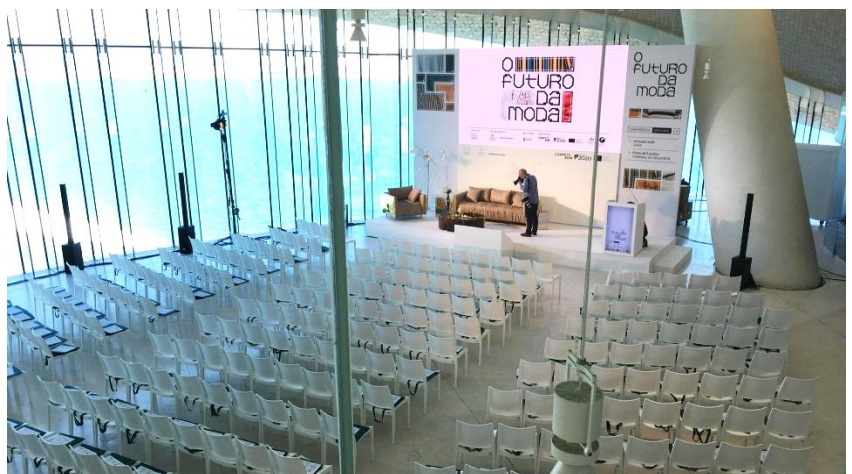
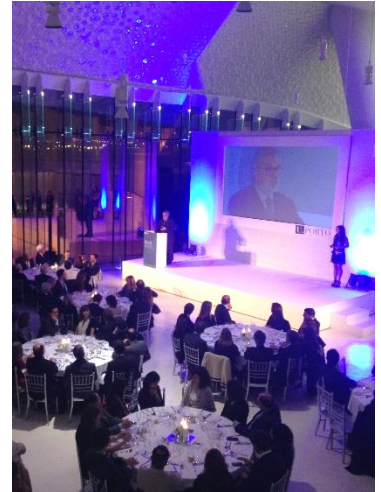


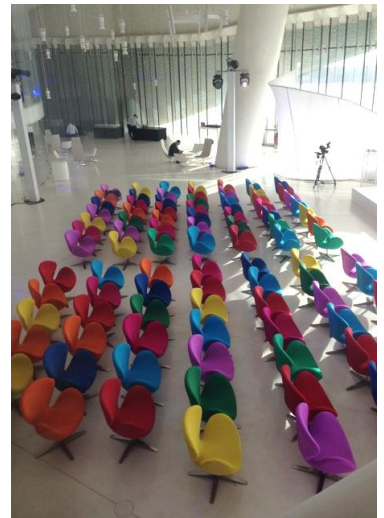


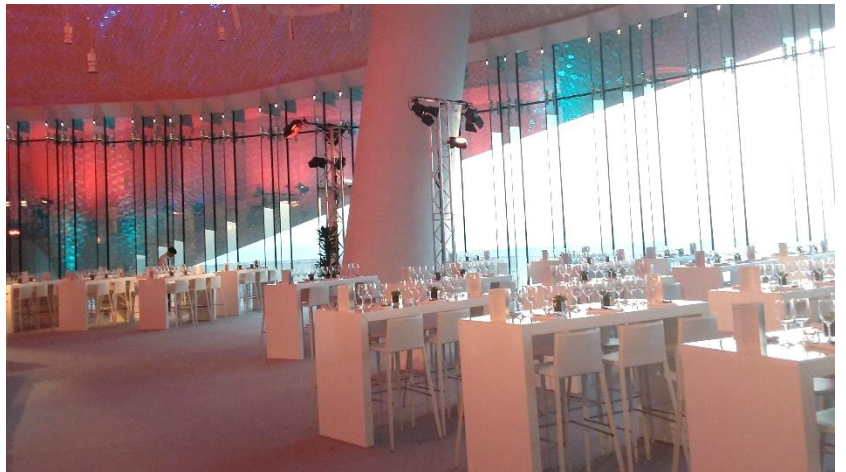
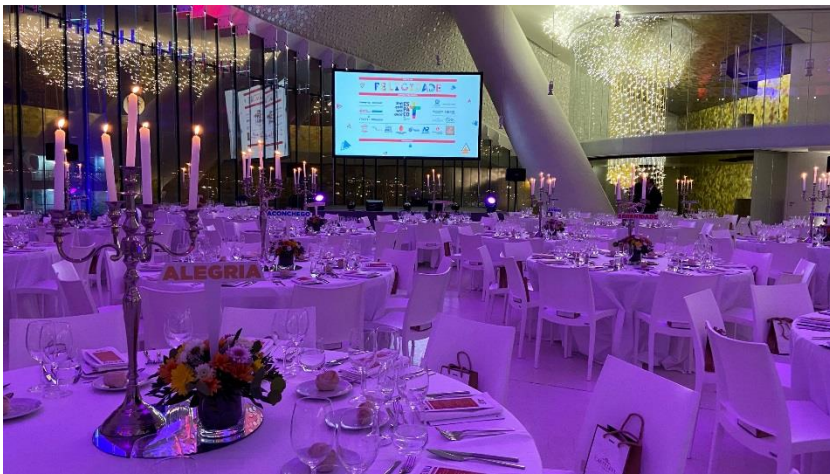
Local perfeito para
jantares de gala,
congressos e exposições

*Perfect place for gala
dinners, congresses and
exhibitions*







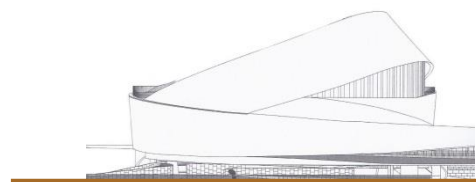


Piso 3 Mezanine e Auditório

Como contraponto à predominância do branco e das superfícies envidraçadas, destacam-se na sala nobre dois espaços distintos: um pequeno auditório e um espaço individualizado que poderá funcionar como zona lounge.

Floor 3 Mezzanine & Auditorium

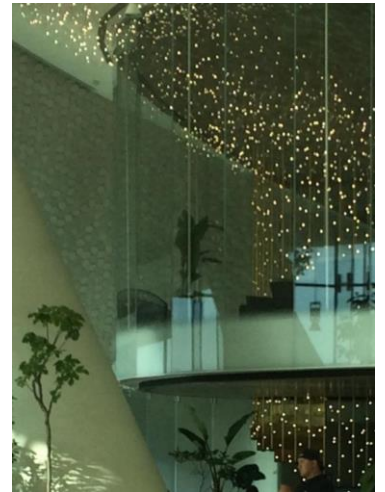
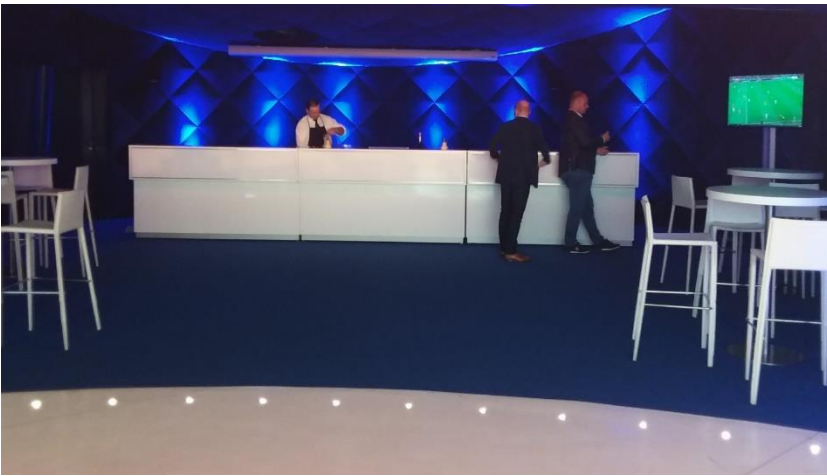
Contrasting with the predominance of white and glazed surfaces, two distinct areas stand out in the main room: a small auditorium and a unique space that can work as a lounge area.

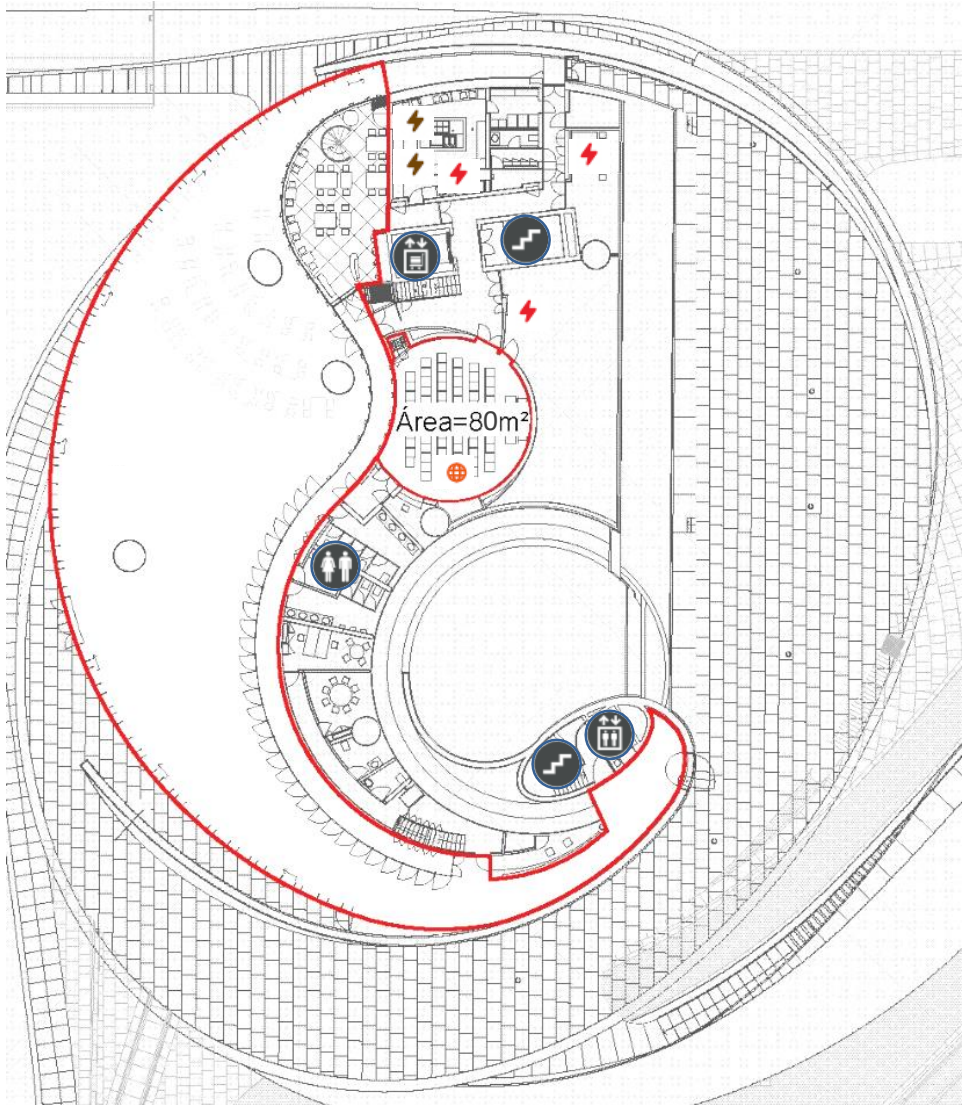




Local perfeito para
pequenas reuniões
e zona lounge

*Perfect place for
small meetings and
lounge area*






Piso 3 Planta
 Floor 3 Floor Plan

Áreas | Capacidades
 Areas | Capacities




 650	 Altura 8 a 12 m
--	---

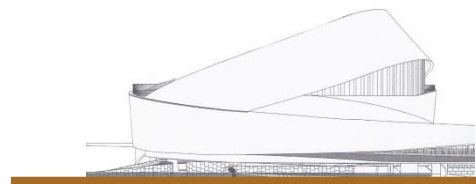
 400	 400
--	--

 400
--

Auditório
 Auditorium

 80	 70
--	--

-  Tomada Trifásica 32A
Three-phase plug
-  Tomada Monofásica 16A
Single-phase plug
-  Tomada Internet
Internet plug

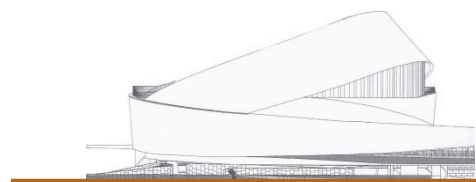


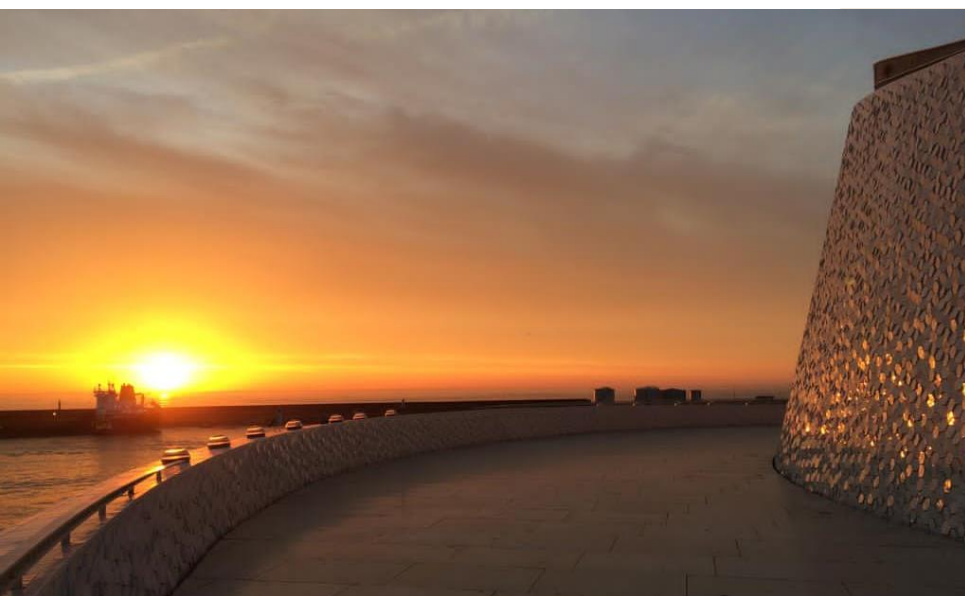
Piso 3 Terraço

Com uma área exterior de 900 m², o piso 3 ostenta um dos espaços mais arrojados da construção, com uma parede inclinada de 14 metros, a abrir para uma vista única sobre o oceano e a cidade.

Floor 3 Terrace

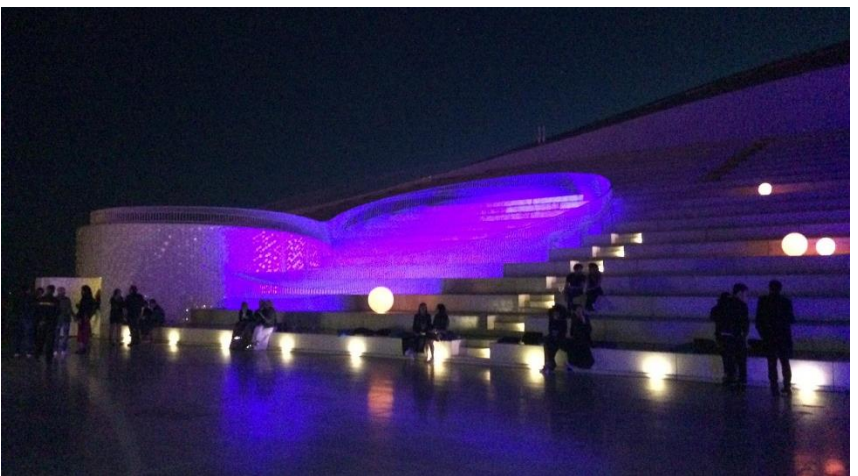
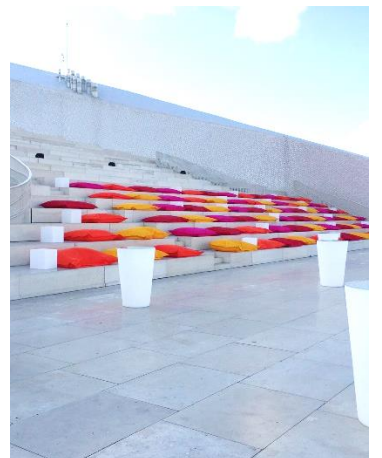
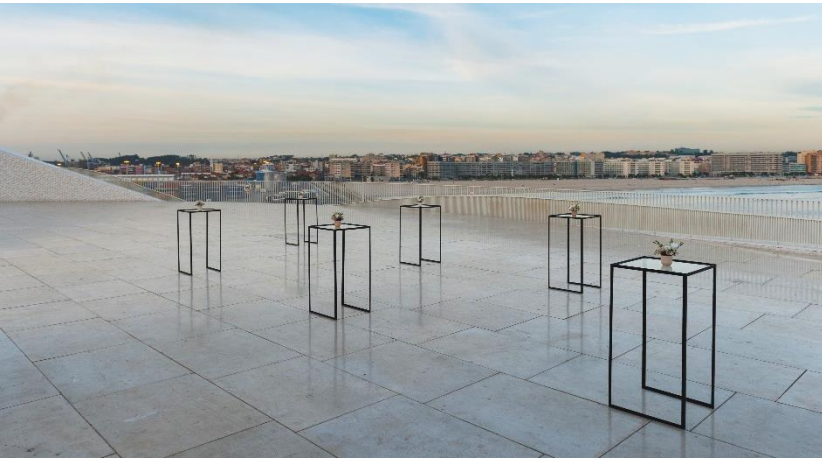
With 900 sqm outdoor area, the 3rd floor shows one of the dashing spaces of the building, with a 14 meters inclined wall, opening to a unique view over the ocean and the city.



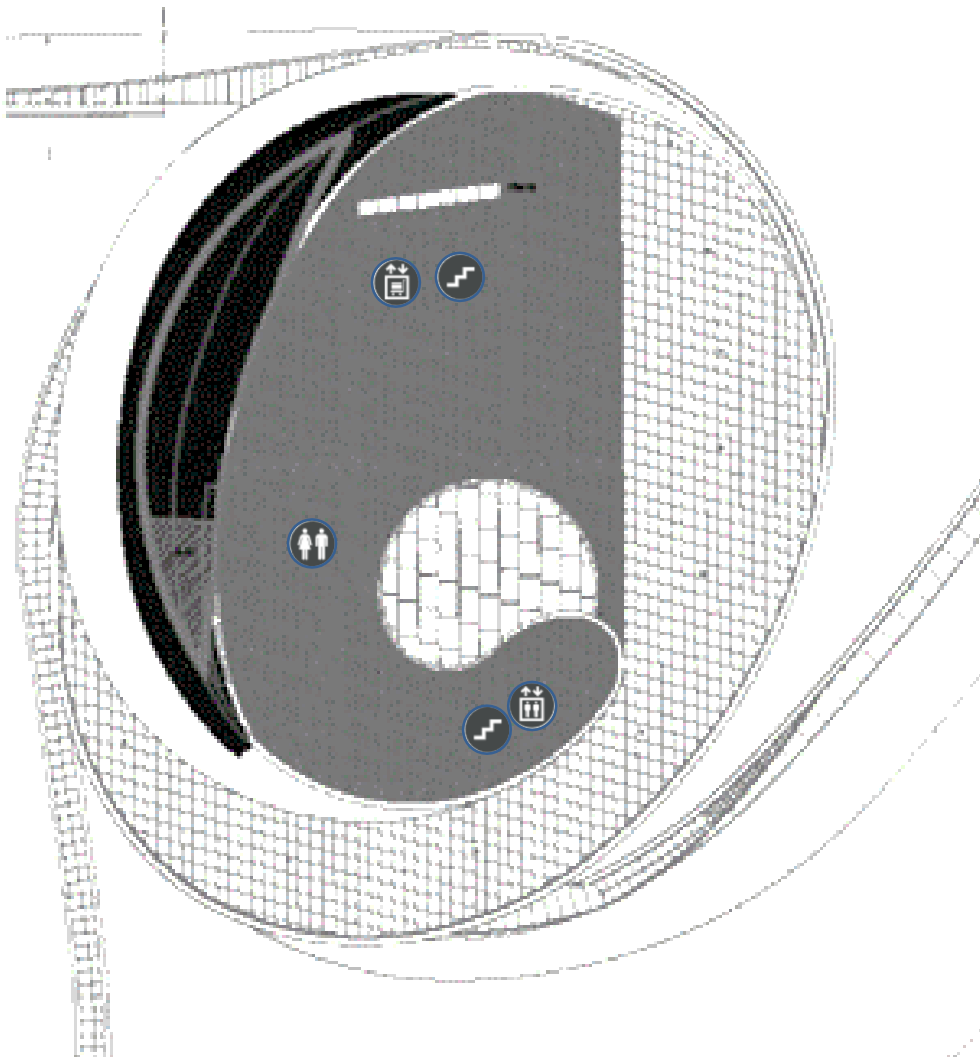


Local perfeito para
cocktails, concertos e
desfiles de moda

*Perfect place for
cocktails, fashion
shows and concerts*



Piso 3 Planta
Floor 3 Floor Plan

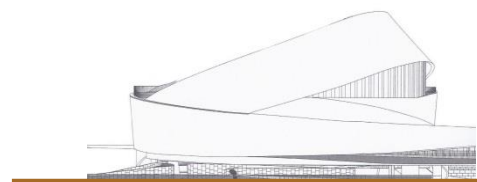


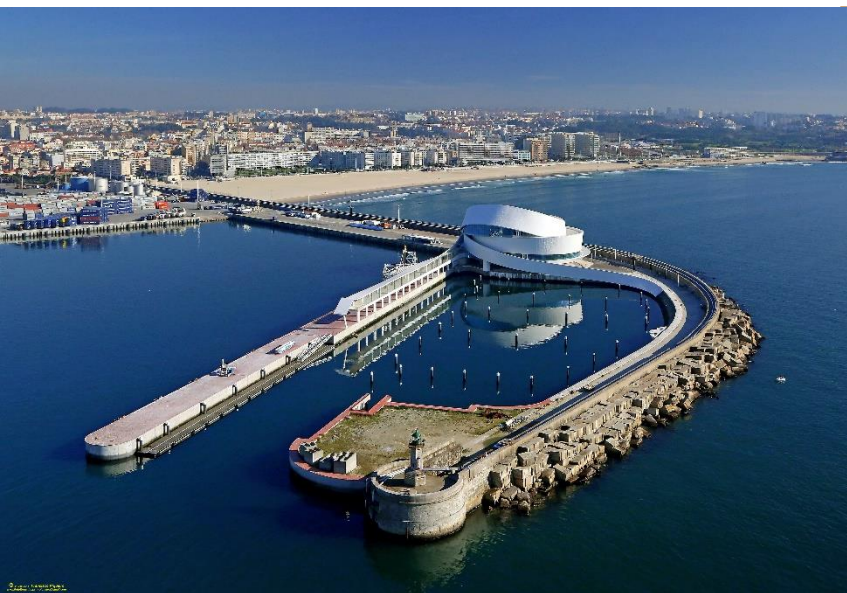
Áreas | Capacidades
Areas | Capacities

Terraço
Terrace

m²
900

Y
400





Cais Flúvio-Marítimo

River Cruise Terminal

Serviços Incluídos

Internet wi-fi
Sistema de som ambiente
Energia elétrica
Segurança
Limpeza
Local para recepção/acreditação
Estacionamento exterior

Serviços Complementares

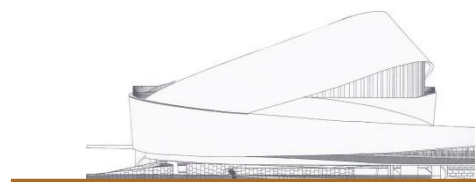
Mobiliário extra
Audiovisuais
Tradução Simultânea
Decoração
Catering
Serviço de recepção complementar
Outros serviços

Included Services

Wi-fi internet
Surround sound system
Electricity
Security services
Cleaning services
Reception/accreditation area
Outdoor Parking

Additional Services

Extra furniture
Audiovisual equipment
Simultaneous translation
Decoration
Catering
Additional reception services
Other services



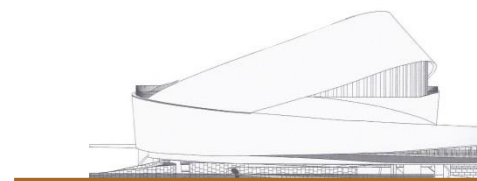


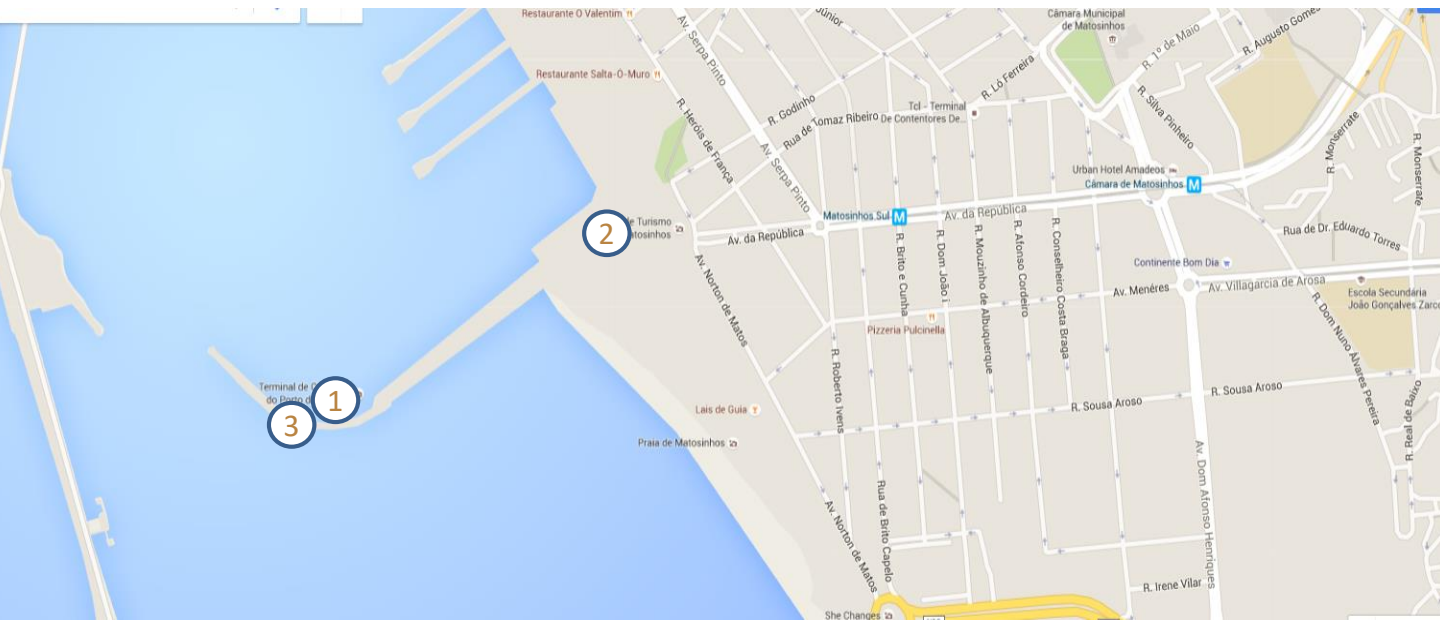
O edifício do Terminal de Cruzeiros do Porto de Leixões, da autoria do arquiteto Luís Pedro Silva, recebeu já importantes prémios e distinções, tanto na área da operação de cruzeiros, como na área da arquitetura e design:

- Seatrade Cruise Awards 2015 (finalista)
- Prémio SIL 2015 (vencedor)
- Prémio Construir 2016 (vencedor)
- World Building of the Year 2016 (nomeado)
- AZ Awards 2016 (vencedor)
- Building of the Year 2017 (vencedor)

Porto Cruise Terminal building, designed by Portuguese architect Luís Pedro Silva, has already received several national and international awards and distinctions:

- Seatrade Cruise Awards 2015 (finalist)
- Prémio SIL 2015 (winner)
- Prémio Construir 2016 (winner)
- World Building of the Year 2016 (nominated)
- AZ Awards 2016 (winner)
- Building of the Year 2017 (winner)





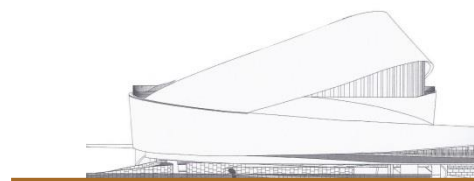
- 1 Terminal de Cruzeiros do Porto de Leixões | *Porto Cruise Terminal*
- 2 Acesso viaturas dos convidados no dia do evento | *Car access to the building*
- 3 Estacionamento no dia do evento/convidados | *Outdoor parking area*

Endereço | Address

Porto Cruise Terminal – Avenida General Norton de Matos,
Matosinhos

Coordenadas WGS84

Lat.: 41°10'37.00"N Long.: 8°42'7.00"W





Contactos

APDL – Administração dos Portos do Douro, Leixões e
Viana do Castelo, SA

Av. da Liberdade . 4450 – 718
Leça da Palmeira . Portugal

Tel.: +351 229 990 700
cruise.porto@apdl.pt